

NEW SERIAL RELAY BOARD FOR MODULAR LINE

To separate the only NPN Open collector "Fault / Fluid" output available in the Modular Line series, a new optional electronic card is now available.

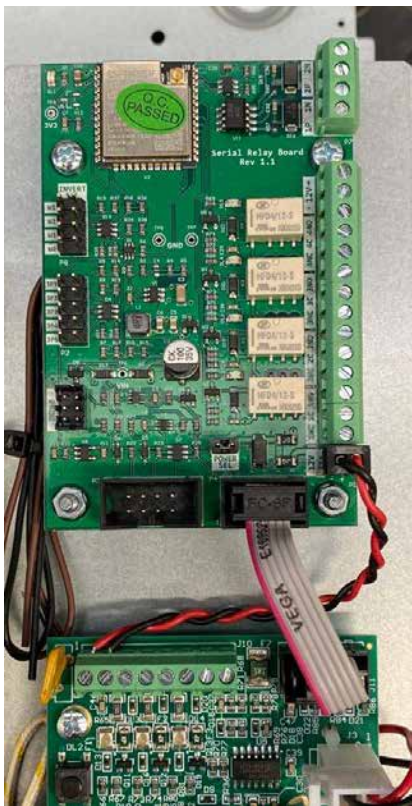
This new electronic card allows to have separate signaling fault outputs such as:

- bag in reserve of fluid
- low battery
- mains power failure
- generic system failure

This new electronic card must be connected directly to the serial port of the Modular motherboard.

In this configuration the ACTIVE CLOUD card cannot be mounted.

The 4 outputs are Relay with both NO and NC configurations available.



PRODUCT CODICE: URREM

MODEL: "Serial Relay Board for Modular line - Provides 4 separate output signals (Empty - Battery Error - AC Mains Error - Generic Fault)"